

# TEGRRYS

Moving closer to your goal together.



## ON ROAD APPLICATIONS

# VERSATILITY, EFFECTIVE MILEAGE AND SAFETY (3PMSF)

### TE48-S



### TE48-D



### TE48-T



SIZE	LI/SC			
315/70 R 22.5	156/150L	C	A	72
315/80 R 22.5	156/150L	C	A	71

SIZE	LI/SC			
315/70 R 22.5	154/150L	D	A	75
315/80 R 22.5	156/150L	D	B	73

SIZE	LI/SC			
385/65 R 22.5	160K	C	A	72

- **Adaptable Tread Pattern Technology:** variable tread geometry during tyre life guarantees robustness and **extended tyre life**.
- Stone ejectors on shoulder grooves prevent stone trapping whilst **preserving the tread depth** and **increasing the tyre life**.
- Waved sipes **enhance grip** whilst **limiting noise generation**.

- **Robust tread pattern** designed to:
  - **maximize traction whilst** reducing footprint movements **enhancing even wear**.
- Side grooves cavities to:
  - prevent stone trapping for longer tread pattern life;
  - **maximize traction**.
- Optimized tread pattern which prevents tears and chipping.

- Optimized groove geometry enhances **even wear**.
- Stone ejectors on shoulder grooves to **extend tyre life**.
- Waved sipes to promote **grip** whilst limiting noise.

## ON-OFF ROAD APPLICATIONS

# ROBUSTNESS, GRABBING, SLOW WEARING

### TE68-S



### TE68-D



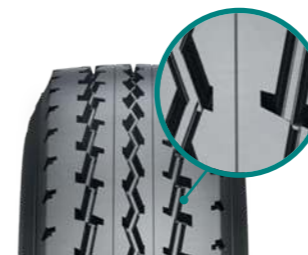
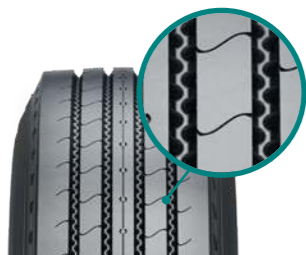
SIZE	LI/SC			
13 R 22.5	156/150K	D	A	70
315/80 R 22.5	156/150K	C	A	74

SIZE	LI/SC			
13 R 22.5	156/150K	POR	POR	POR
315/80 R 22.5	156/150K			


POR: Professional Off Road Tyres, out of the scope of EC Regulation 1222/2009

- **Robust tread pattern** suitable for the toughest conditions.
- Stone ejectors on shoulder grooves to **enhance casing durability**.
- Optimized groove geometry:
  - **maximize traction**;
  - promote acoustic comfort;
  - limit noise generation.




- **Robust tread pattern** suitable for the toughest conditions.
- Connected tread blocks to **stabilize block movements** and **enhance tread life**.
- Optimized groove geometry, which:
  - **maximize traction**;
  - limit noise generation.
- **Adaptable Tread Pattern Technology:** variable tread geometry during tyre life guarantees **robustness** and **extended tyre life**.



# TECHNICAL DATA

SIZE	LOAD INDEX/SPEED CODE	PATTERN	SECTION WIDTH (MM)	DIAMETER (MM)	STATIC RADIUS (MM)	ROLLING CIRC. (MM)	RIMS			
<b>385/65R22.5</b>	160 K (158 L)	TE48-T	381	1066	484	3251	<u>11.75</u> 12.25	C	A	72 
<b>315/80R22.5</b>	156/150 L (154/150 M)	TE48-S	316	1070	498	3264	<u>9.00</u> 9.75	C	A	71 
<b>315/80R22.5</b>	156/150 L (154/150 M)	TE48-D	316	1078	501	3288	<u>9.00</u> 9.75	D	B	73 
<b>315/70R22.5</b>	156/150 L (154/150 M)	TE48-S	315	1003	464	3059	<u>9.00</u> 9.75	C	A	72 
<b>315/70R22.5</b>	154/150 L (152/148 M)	TE48-D	315	1012	468	3087	<u>9.00</u> 9.75	D	A	75 
<b>13R22.5</b>	156/150 K (154/150 L)	TE68-S	316	1117	518	3407	<u>9.00</u> 9.75	D	A	70 
<b>13R22.5</b>	156/150 K (154/150 L)	TE68-D	316	1121	519	3419	<u>9.00</u> 9.75	POR	POR	POR
<b>315/80R22.5</b>	156/150 K	TE68-S	316	1076	500	3282	<u>9.00</u> 9.75	C	A	74 
<b>315/80R22.5</b>	156/150 K	TE68-D	316	1080	502	3294	<u>9.00</u> 9.75	POR	POR	POR

POR: Professional Off Road Tyres, out of the scope of EC regulation 1222/2009.

Rim underlined is measuring rim.  =energy efficiency class;  =wet grip class;  =external rolling noise class.

# TEGRYS

A brand of

## PROMETEON

PROMETEON.COM